



Art.-Nr.:  
item# **24139x**


## Navi Hyundai Veloster ab 10/2011




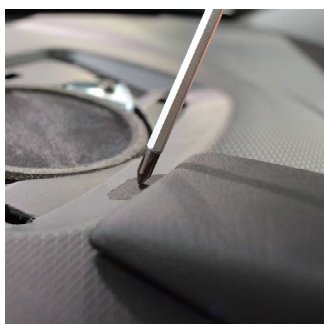
 Lautsprecherabdeckung lösen  
Bitte benutzen Sie nur ein Kunststoff-Werkzeug!

 Loosen speaker cover  
Please use only plastic tools!




 Konsole wie abgebildet einschieben

 Insert console as illustrated




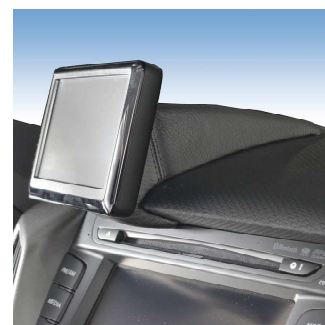
 Beiliegende Schraube durch das Blech eindrehen

 Install enclosed screw through metal plate



 Alle Bauteile wieder montieren

 To remount all component parts



Änderungen vorbehalten Subject to change

Art. 24139x

## Navi Hyundai Veloster ab 10/2011



Enlevez la couverture d'haut-parleur  
Veuillez n'utiliser qu'un outil de matière plastique



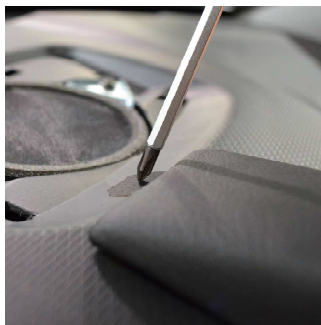
Suelte el revestimiento del altavoz  
Use sólo herramientas de plástico!



Inserez la console comme illustré



Meta la consola como mostrado



Vissez la vis ci-jointe à travers la tôle



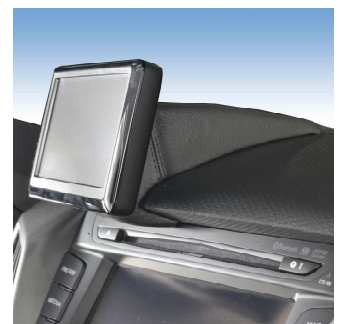
Instale el tornillo adjunto por la chapa



Remontez les éléments de construction



Remonte todos partes de construcción



Nous nous réservons la possibilité de modification

Salvo posibles modificaciones

Art. 24139x

## Navi Hyundai Veloster ab 10/2011



Luidsprekerpaneel losmaken  
Alleen plastic gereedschap gebruiken alstublieft!



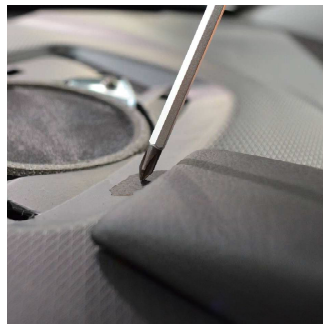
Pokrywe glosnika zdemontowac  
Prosze uzywac tylko narzedzi z tworzywa sztucznego.



Konsole zoals afgebeeld inschuiven



Wsunosc konsole, jak przedstawiono na zdjeciu.



Meegelverde schroef door de metalen plaat draain



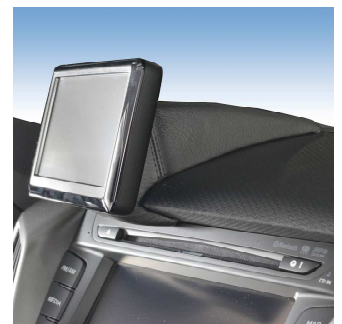
Zalaczona srube przez blache wkręcic



Remonte todos partes de construcción



Wszystkie elementy ponownie zamontowac



Nous nous réservons la possibilité de modification Salvo posibles modificaciones